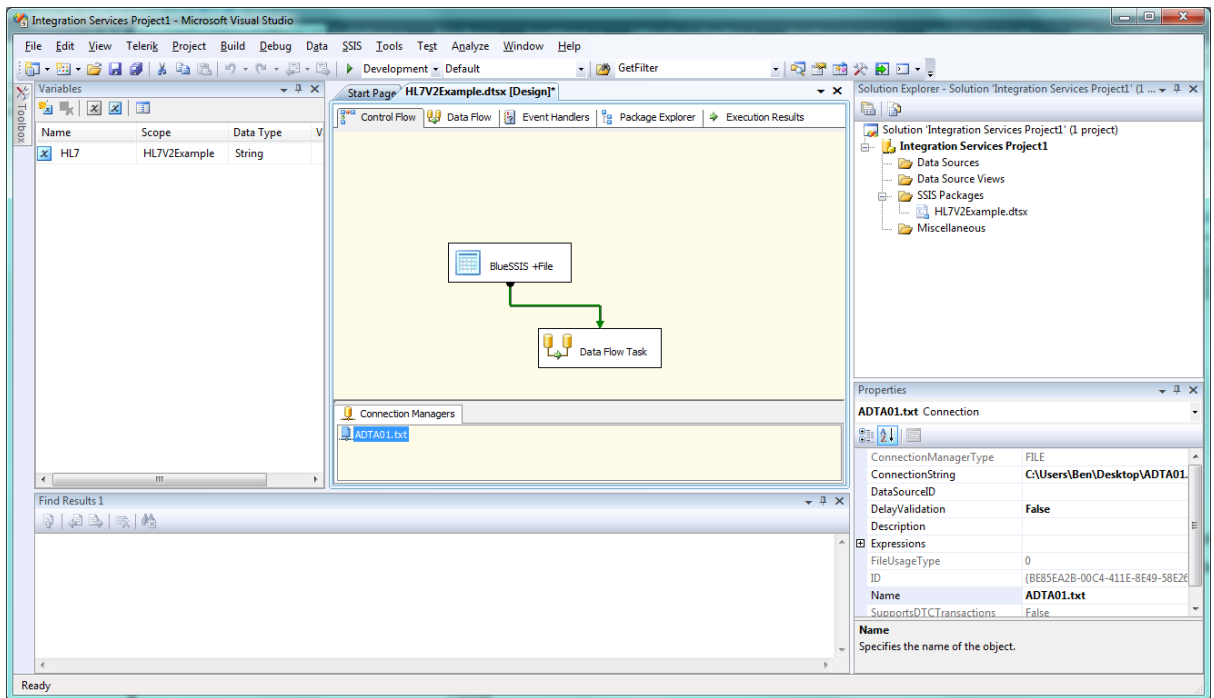


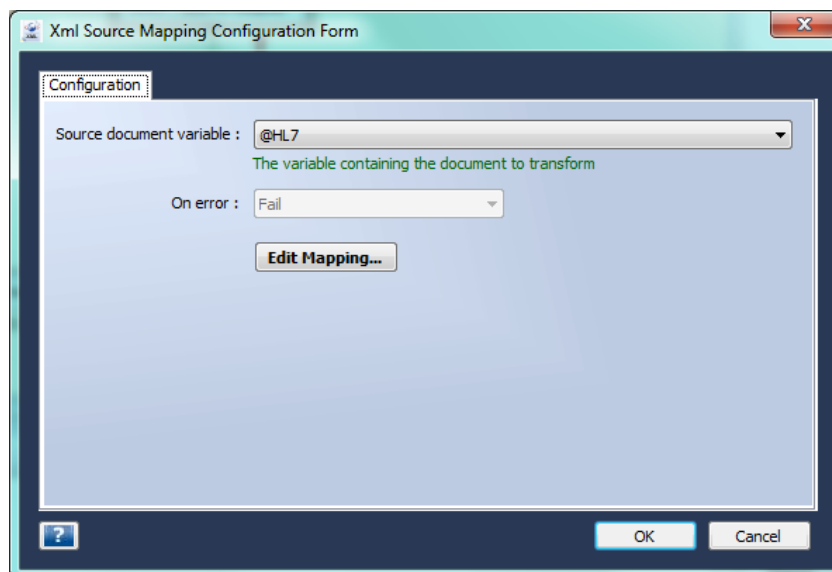
BlueSSIS HL7 Notes

To set up a basic HL7 v2 Messaging Scenario

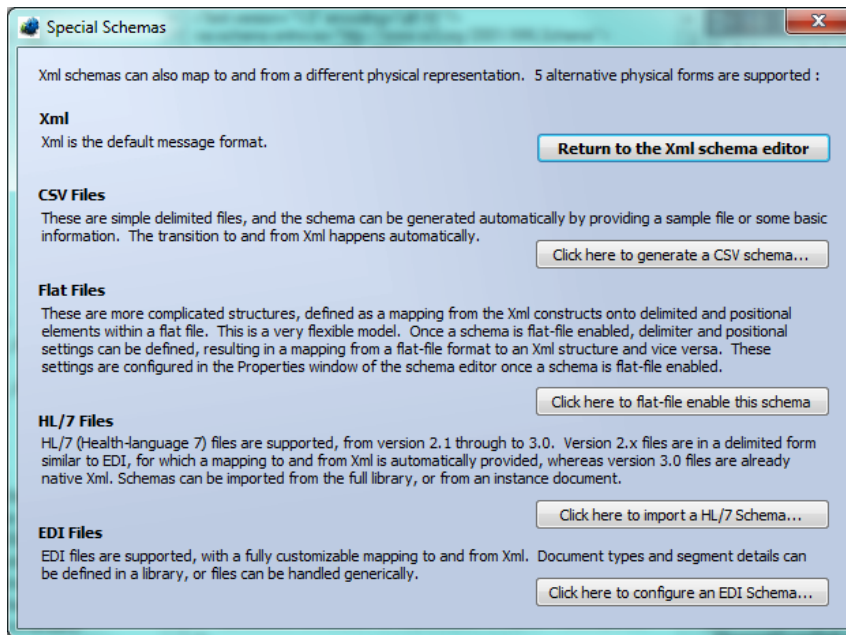
- (1) We create a variable to hold the HL7 Message, and then populate that using a BlueSSIS +File task (though you will receive it from MLLP). We then call a data-flow.



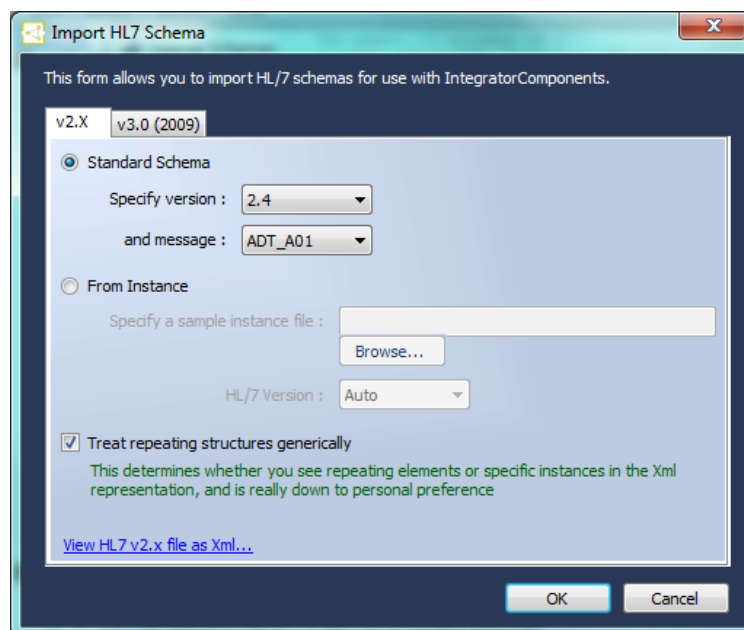
- (2) In the data-flow, we use a BlueSSIS +Xml Source Adapter. We select the source variable, and then click the Edit Mapping... button to configure the mapping.



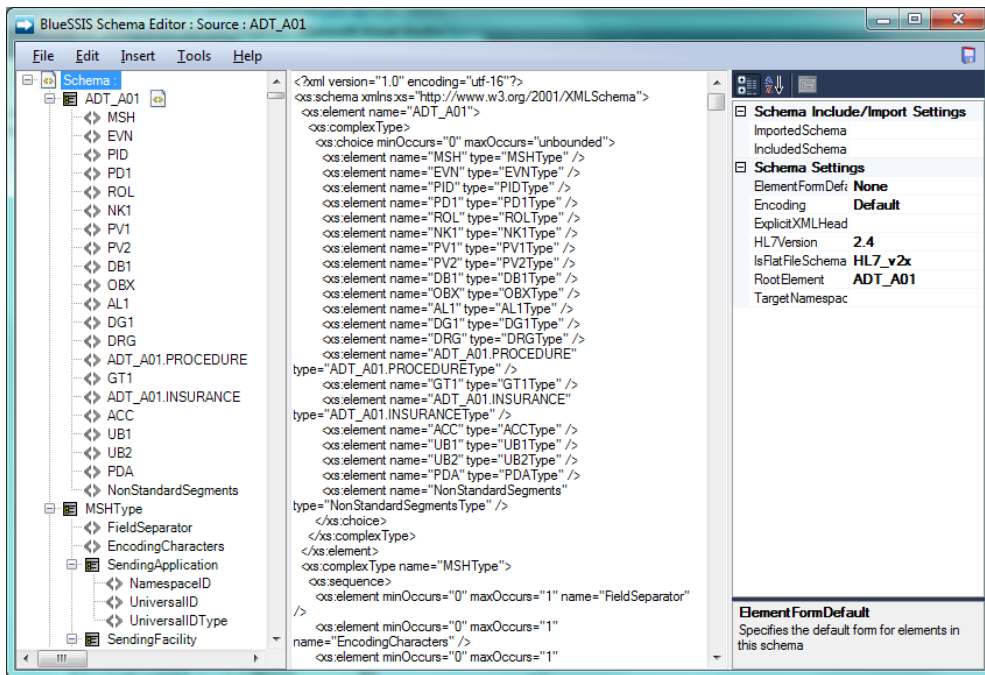
- (3) We click on the Edit Source Schema link on the map editor, and that then shows the schema editor. The following form should be displayed (or you can select it from the Tools menu).



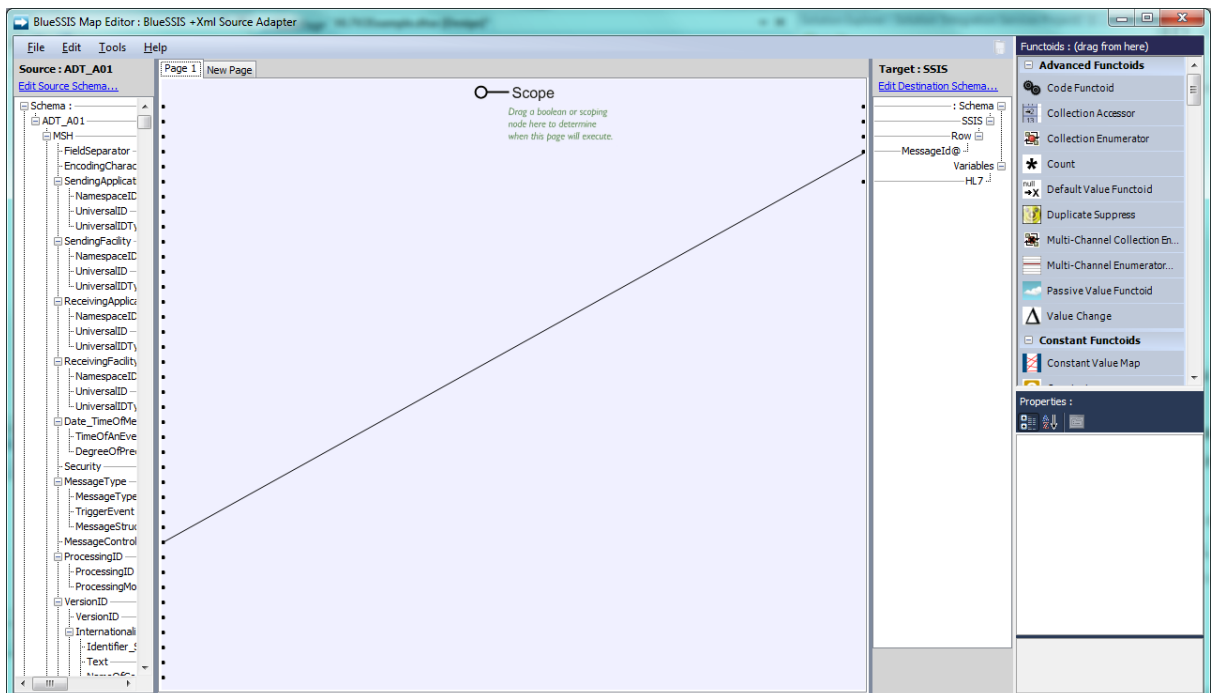
(4) Click the HL7 Option, then import the schema for ADT^A01, version 2.4.



(5) You'll be returned to the schema editor. Save and Close.

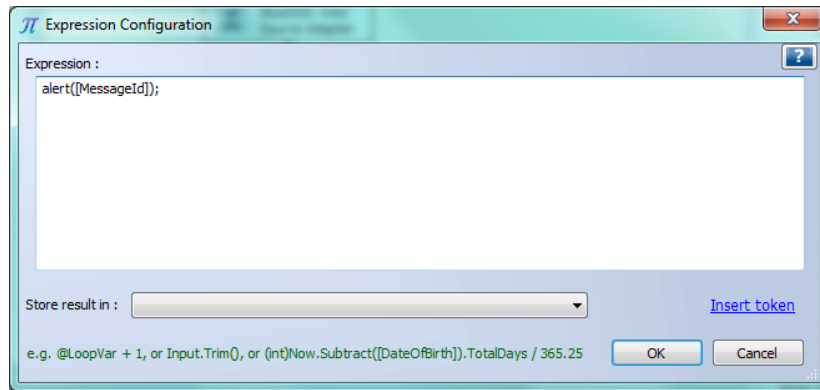


- (6) The mapper will now offer to generate the output columns. Don't let it do this, or you will end up with thousands!
- (7) Click the Edit Destination Schema link on the right hand side of the mapper, and then add a new column called MessageId. OK. Now drag a link from the MessageControlId field in the left hand tree. We've now defined an output column that will contain this data.

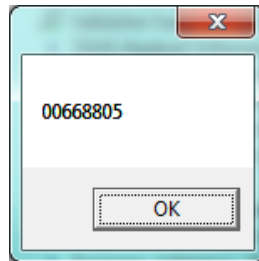


- (8) Repeat as necessary for all the other fields you want. As you'll see, there are also lots of 'functoids' in the panel that you can use to perform mapping tasks, such as arithmetic, database lookups, string mappings, summations etc. Just drag to a functoid, and then drag an output link from the functoid. Functoids can be chained together as required.

(9) Time to test. We add a BlueSSIS +Expression shape with the following script (generated using the Insert Token link) :



(10) We run on a test file, and get the following :



If you have any further queries please don't hesitate to contact me.

Thanks,

Ben Jackson

benj@bluehub.co.uk